



ART & ABOUT

Feilding & District Art Society, 104 Manchester St, Feilding,
PO Box 207, Feilding: Phone: (06) 3232323:
Email: art@fadas.co.nz : Facebook page: Feilding & Districts Art Society;
website: <https://feildingartsociety.com/>
Opening Hours: Monday to Friday 10.00am to 4.00pm;
Saturday 10.00am to 1.00pm;

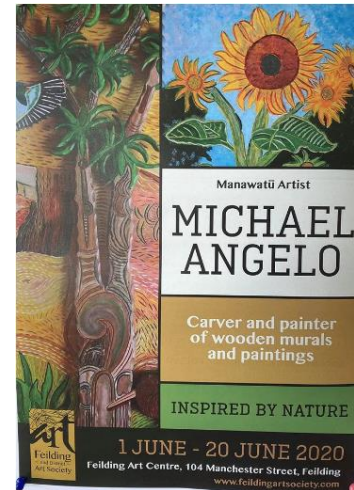
June 2020

Extra News

MUST SEE!

Exhibition

Monday 1st June - 20th June Michael Angelo Burke with his 'Inspired by Nature'. Make sure you come and see this. Something very different. Its unique, stunning, amazing! We wish you luck Michael and apologise that at this time, because of our 'restrictions' we were unable to have an opening as planned. Hopefully next time!



Lockdown Exhibition 22 June until 10 July 2020

With the unfortunate 'deferring' of EXPO and the Members Awards, we have decided to have a 'Lockdown Exhibition'. No doubt you will have many canvasses from the 2 months+ lockdown and we would like to see your creations!

Entry forms are on the counter and I have also attached a copy for you. As always, we are hoping to have lots of support with this exhibition as well.

Depending on where we are with covid-19 restrictions, we will have an opening on Sunday 21st June. Will keep you informed with this.

Entries must be in by **Wednesday 17th June, no later than 3.00pm** to give me time to do labels. Please read instructions carefully.

Have-a-go groups

These have started again, Tuesday, Thursday and Friday. 10.00am to 12noon. \$3 per session which contributes to power etc.

Reminder to Volunteers on Roster Duty

Please remind visitors and members to 'sanitise and sign in'. Thank you



Mahara Art Gallery will have the exhibition Capital Views featuring Jack Register Paintings of the Wellington region up in the gallery from Wednesday 3rd June to 27th June.

The painting on the invite is now for sale with all proceeds going towards the Mahara Art Gallery redevelopment project.

Annual Subscriptions were due 1st April but with Covid restrictions we were unable to notify members. \$35 per member. Please pay next time you are in the Centre or you can Direct Debit the Art Centres account. Thank you

ANNUAL GENERAL MEETING

Monday 10th August, 7.30pm

'Nomination Forms' available in the Centre

Please consider standing for Committee, it would be nice to have some new faces

Shop local, support local - all businesses have struggled over this crazy 2 months. Please consider supporting them, Kerry goes above and beyond to give you the best deal.

